

# THE POWER OF

# REDARC®

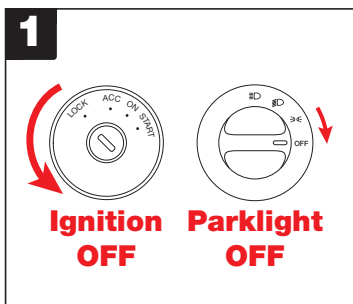
## Setting up an optional sensor on a REDARC 52mm Boost and EGT gauge

This guide is suitable for the following REDARC gauges:

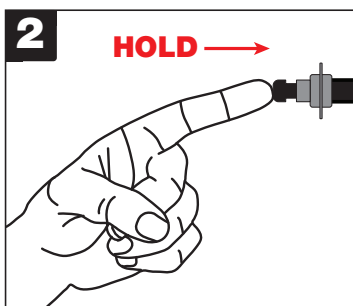
- EGT & Boost Pressure gauges with optional current display (G52-BEA)
- EGT & Boost Pressure gauges with optional temperature display (G52-BET)
- EGT & Boost Pressure gauges with optional oil pressure display (G52-BEP)

Before commencing:

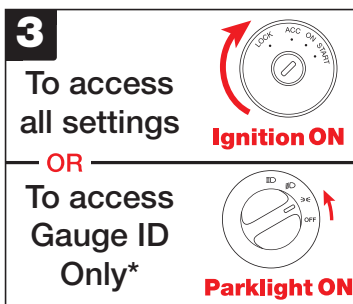
- If the gauge is part of a multiple gauge set up, disconnect the purple wires from each other.
- Connect the additional sensor as per the supplied instructions



Have the ignition and the head light/park light switches in the 'OFF' position.



Press and hold the programming button.



Whilst still holding the programming button, Turn on either the ignition switch or the head light switch.

Note that some vehicles may not bring on the lights without the ignition turned on some testing may be required before commencing the programming procedure.



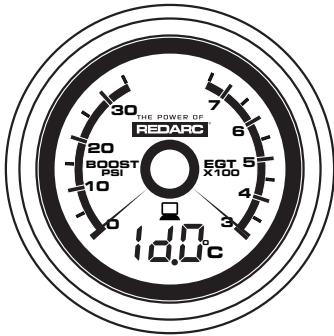
Once the ignition or the lights are on, release the programming button.

# TECH TIP

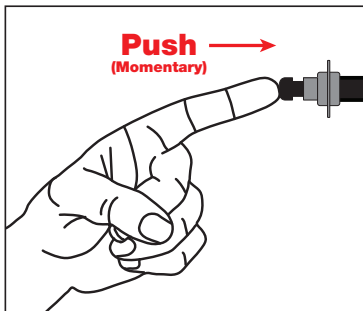
Copyright 2018 REDARC Electronics Pty Ltd. All Rights Reserved

THE POWER OF

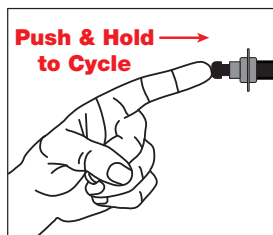
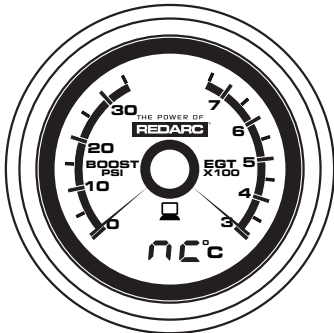
**REDARC**<sup>®</sup>



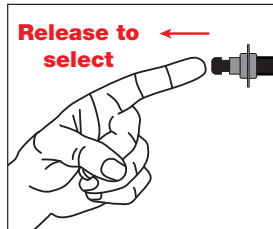
After the release of the programming button, the gauge is in programming mode and an identification number (shown on the gauge as 'Id.number') will be displayed.



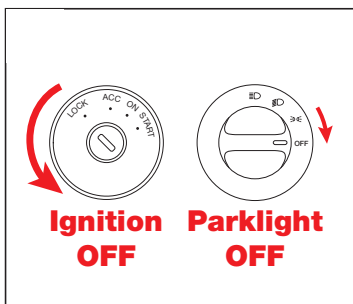
Press the programming button momentarily to cycle through the modes. Mode number 6 is the temperature display mode which should be displayed as a 'nc' on the gauge.



To change the setting press and hold the button, the display will cycle between 'nc°C' and '0.0°C'. Whilst the display is showing '0.0°C', release the button.



If the gauge fails to cycle between 'nc°C' and '0.0°C', turn off the ignition and/or the park light switch and check the sensor wiring.



The final step is to turn off the ignition and/or the park light switch to save the changes made to the temperature sensor mode.

The gauge is now ready to use. For further queries, it is please call REDARC on (08) 8322 4848.

**TECH TIP**

Copyright 2018 REDARC Electronics Pty Ltd. All Rights Reserved